



# Merewether High School Year 7 2022

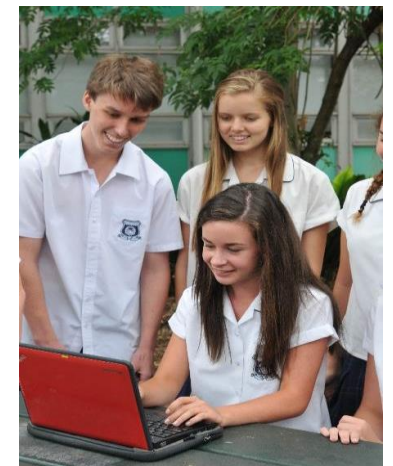
Application procedures for academically selective  
high schools





# Academic Selective High School

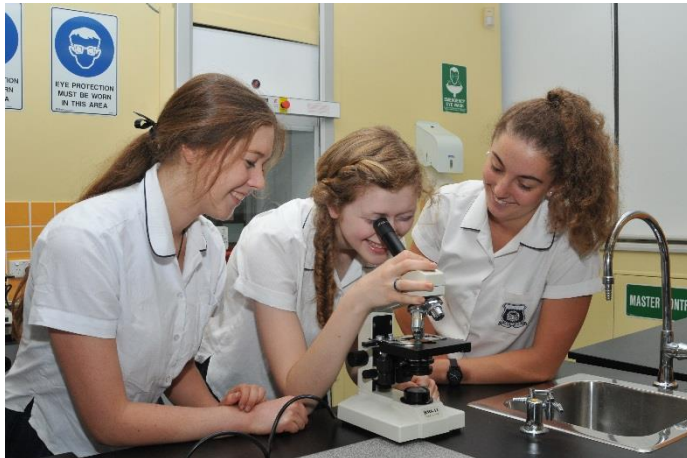
- Merewether is one of 21 fully academically selective high schools in NSW
- Selective high schools cater for academically gifted students with high potential who may otherwise be without sufficient classmates of their own academic standard.
- Selective high schools help these students to learn by grouping them with students of similar ability, using specialised teaching methods and materials. Selective high schools are unzoned so parents can apply regardless of where they live.





# Gifted and Talented Education

- Students have the capacity to learn faster
- They also have the capacity to manipulate abstract ideas and make connections to other learning
- The school's curriculum is adapted to accommodate the learning needs of our GAT students





# Gifted and Talented Education

- Gifted and high potential students need more challenging learning with greater depth and complexity. Gifted students can have a level of cognitive function typical of students several years older, with high levels of fluid thinking, reasoning and working memory function.
- Lack of adequate challenge can contribute to social and emotional challenges. These can include boredom, disengagement, and perfectionist-type behaviours. Challenging learning experiences, positive social relationships and a supportive school environment help gifted students thrive.





# Gifted and Talented Education



- **Specific strategies are needed to help gifted students achieve their best.** Teaching practices should align the challenge, complexity, depth and pace of learning with the learning needs of gifted students. Specific strategies may include curriculum acceleration, extension and enrichment learning.
- **Gifted students benefit from explicit teaching and well-structured learning.** Gifted learners require scaffolding and structure in learning to help manage the demands of cognitive load. Explicit teaching and guided inquiry are necessary for gifted students.



# Teaching Profile

- Teaching staff appointed per student population
- Explicit training in Gifted and Talented education with all teaching staff completing the Certificate of Gifted Education through UNSW
- Focus on Thinking Skill Development
- Mixture of new thinking and experience
- Additional training and development in current educational practices and issues for all staff





# Academic Achievements

## HSC Results:

- Students on the state all rounders list (band 6 in at least 10 units)
- 13 students in 2019 achieved an ATAR above 99
- 312 Band 6s and 477 Band 5 results
- Students regularly achieve state rankings including;
  - 1<sup>st</sup> Place in Geography, 1<sup>st</sup> in German Continuers, 1<sup>st</sup> in Legal Studies,
  - 4<sup>th</sup> in Advanced English, 2<sup>nd</sup>, 7<sup>th</sup> and 12<sup>th</sup> in Biology,
  - 3<sup>rd</sup> in Engineering Studies and Hospitality
  - 2<sup>nd</sup>, 4<sup>th</sup>, 6<sup>th</sup> and 7<sup>th</sup> in Food Technology
  - 5<sup>th</sup> in Chemistry, 8<sup>th</sup> in Geography and 10<sup>th</sup> in Ext 2 English
- Perfect scores in Mathematics Extension 1 one unit and Mathematics Extension 2 two unit, Food Technology and Extension Music
- 75% of students achieve an ATAR above 90
- Student works selected to be showcased in Visual Arts – Art Express, Music in Encore, Design & Technology in Design Excellence Forum, Extension English 2 Writer's showcase
- Accelerated HSC program for Year 11 students delivers outstanding Band 6 results





# Academic Competitions and enrichment activities

- English
- Mathematics
- Science
- Geography
- History
- Technology
- Poetry
- Creative Writing
- Public Speaking
- Debating
- Business Studies
- Mock Trial
- MUNA





# Creative and Performing Arts

- Wide Range of Courses:
  - › Visual Arts
  - › Drama
  - › Music
  - › Visual Design
  - › Photographic and Digital Media
- Performances & Exhibitions:
  - › Star Struck
  - › Drama & Dance festivals
  - › Young Artists Exhibitions
  - › Art Express
  - › Onstage
  - › Choir & vocal groups
  - › Band & music groups
  - › Drama & Dance ensembles





# Sporting Achievements

School, Zone, Regional and National representation and competition:

- Athletics
- Swimming
- Cross Country
- Water Polo
- Triathlon
- Rugby Union
- Rowing
- Aerobics
- Basketball and Netball
- Tennis
- Baseball and Softball
- Cricket
- Hockey
- Rugby League, Soccer, Touch Football and Oztag



A rich history of sporting excellence



# Extra Curricular

- Duke of Edinburgh Awards
- International Tours
- Star Struck
- Green Day
- Gala Days
- Chess Competitions
- Robotics
- F1 Cars
- Short Film Festival
- Many interest clubs





# Parent and Community Involvement

- Highly engaged Parents and Citizens Association
- Generous support of local clubs, businesses and community service groups
- Community hire of school facilities
- School Canteen
- Parent volunteers
- Parent representation on various committees
- Year 9 Inquiry Based Learning Presentations
- Parent Learning Groups
- Attendance at school events





# Curriculum Structures

- Stage 4 (Years 7 & 8)
- Stage 5 (Years 9 & 10)
- Stage 6 (Years 11 & 12)
- Electives in Years 8, 9 and 10
- HSC Acceleration – Year 10/11
- Academic Enrichment – Inquiry Based Learning Year 9
- High Performing Students Program – Newcastle University Extension Courses





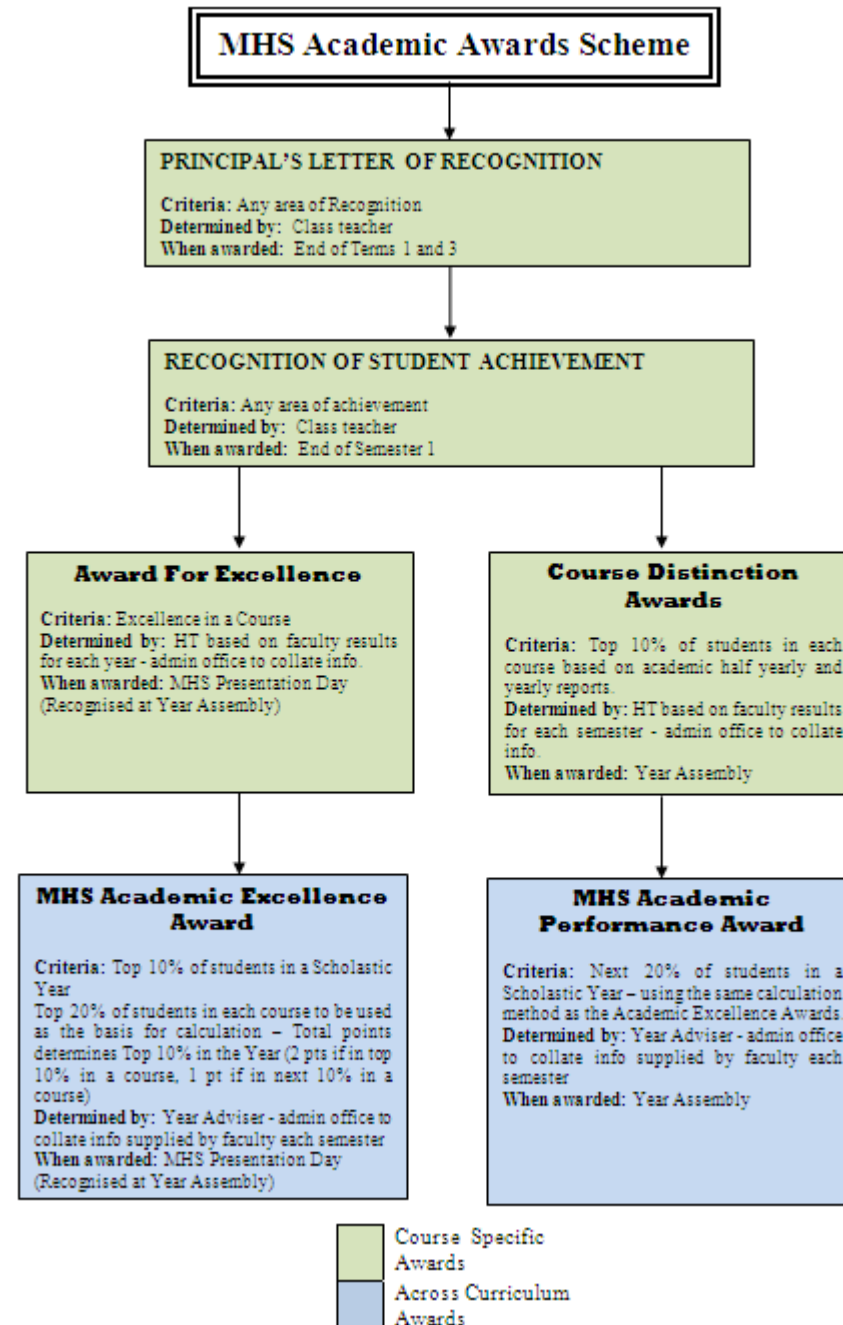
# Student Wellbeing

- Academic and Pastoral Wellbeing
- Growth mindset
- Year Advisers
- Head Teacher Teaching and Learning
- School Counsellors
- Deputy Principals
- School Learning and Support Team
- Numerous programs: group activities and camps, peer support, year meetings, visiting performances, student interest groups, special focus presentations...



# Award System

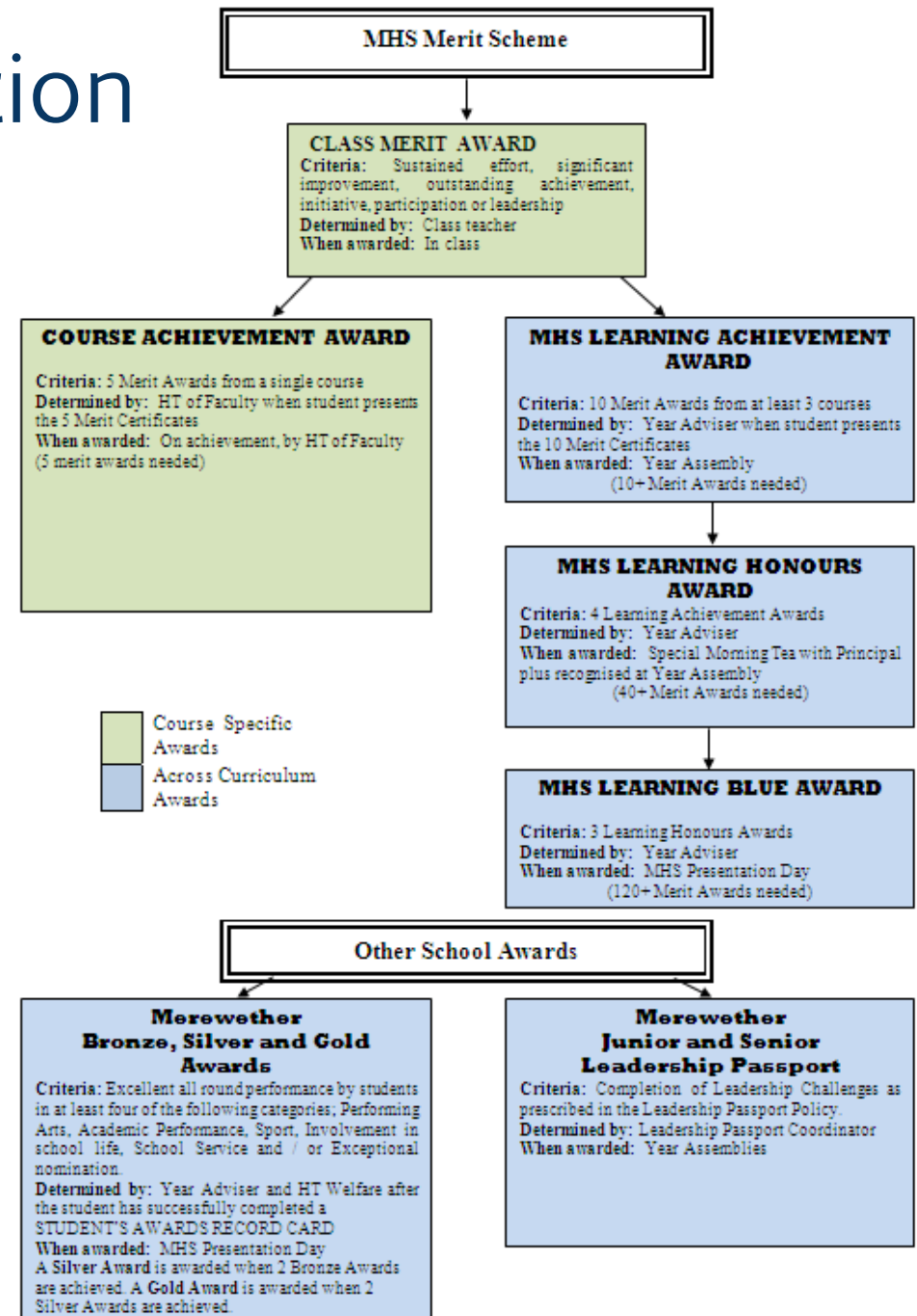
- Exceptional students in a comprehensive range of endeavours
- 2 Award Schemes operate within the school
- MHS Academic Awards
- MHS Merit Awards





# Celebration and Recognition

- Letters Home
- Presentation Assemblies
- School Notice Board
- School Bulletin
- Assemblies
- School Notices





# Citizenship

- It is our belief that students of Merewether High School are not only the leaders of the future, but also the leaders of today.
- We are very active in providing opportunities for citizenship and leadership through programs that support students to develop a sense of service and social justice.





# How to Apply

- The selective high school placement process for Year 7 entry is administered by the High Performing Students Unit
- The Selective High School Placement Test will change in 2021 for placement in 2022. It will be paper based with new types of questions and a different scoring system.
- Apply Online –application website opened 13<sup>th</sup> October 2020
- Online application – <https://education.nsw.gov.au/public-schools/selective-high-schools-and-opportunity-classes/year-7>
- 16<sup>th</sup> November 2020 – Application website closes. **Late applications will not be accepted.**



High Performing Students Team



## Placement in selective high schools for Year 7 entry in 2022

### Information for applicants

Thinking of applying for  
a government selective  
high school for Year 7  
in 2022?

You must apply online at:  
[https://education.nsw.gov.au/  
public-schools/selective-high-  
schools-and-opportunity-  
classes/year-7](https://education.nsw.gov.au/public-schools/selective-high-schools-and-opportunity-classes/year-7)



The Selective High Schools placement process for Year 7 entry is administered by the High Performing Students Team. It is referred to as 'the Team' in this document.

**Contact Details:**

High Performing Students Team, NSW Department of Education  
 Email: [ssu@det.nsw.edu.au](mailto:ssu@det.nsw.edu.au)  
 Telephone: 1300 880 367  
 Postal Address: GPO BOX 33, SYDNEY NSW 2001

**Facebook:**  
[https://www.facebook.com/groups/  
772251106301086/](https://www.facebook.com/groups/772251106301086/)

#### Key Dates

Application website opens:  
13 October 2020

Application website closes:  
16 November 2020  
You must apply before this date.

Test centre and test authority advice  
released:  
25 February 2021

Selective High School placement test:  
11 March 2021

Placement outcome information released:  
2 July 2021

Please read this booklet carefully before  
applying.

From this year, you will be able to log  
into your application to send and  
receive messages and notices.

There may be changes to the procedures  
in this document. Check the website at  
[education.nsw.gov.au/shs-oc](https://education.nsw.gov.au/shs-oc) regularly for  
updates throughout the application and  
placement process.

Please check the website for information  
before you contact the Team.

#### Stages of the placement process

1	Parents read the placement information online.	From late-September 2020
2	Parents register, receive an access key, log in and then complete and submit the application online.	From 13 October 2020 to 16 November 2020
3	Parents request any reasonable adjustments for disability when applying, including relevant documentation.	From 6 October 2020 to 9 November 2020
4	Principals provide school assessment scores.	From 17 November 2020 to 4 December 2020
5	Parents are given test centre information and the 'Test authority' letter.	On 25 February 2021
6	Students sit the Selective High School Placement Test for entry to Year 7 in 2022.  'Report of academic merit' due for interstate or overseas students not sitting the test.	On 11 March 2021
7	Requests for special consideration for illness/misadventure are submitted.	By 18 March 2021
8	Last day to change selective high school choices.	25 April 2021
9	School selection committees meet.	In May and June 2021
10	Placement outcome expected to be released.	2 July 2021
11	Parents submit appeals.	By 9 July 2021
12	Parents accept or decline offers.	From July 2021 to at least the end of Term 1 2022
13	Names of students who have accepted offers are withdrawn from any reserve lists they may be on.	At 3pm on 15 December 2021
14	Parents of successful students are given 'Authority to attend' letters to take to the school on the first day of term in 2022.	Mid-January 2022

<https://schoolsequella.det.nsw.edu.au/file/eafa8804-3a28-4730-9fc0-0ee49dd90f83/1/SHS-application-information.pdf>



# Test Information

The Selective High School Placement Test will change in 2021 for placement in 2022. The new test will have a greater emphasis on thinking skills, mathematical reasoning and problem solving. It will also adjust and balance the weighting given to Mathematics, English and thinking skills test components.

Further information regarding the changes in the test format will be uploaded to the following address in coming weeks:

- <https://education.nsw.gov.au/public-schools/selective-high-schools-and-opportunity-classes/year-7/the-test>



# What Happens Next?



Date: \_\_\_\_\_ Our reference: \_\_\_\_\_

Dear | \_\_\_\_\_

I refer to your application for Year 7 entry to a selective high school in 2016 on behalf of:

Student Number: \_\_\_\_\_

I am pleased to offer your child a Year 7 place in 2016 at:  
**Merewether High School**

Accompanying this advice is an 'Outcome information bulletin'. Attached also is an 'Outcome information bulletin'. You must read this document as it explains the terms used in the outcome advice and the placement process. It also tells you what you need to do. The bulletin also explains how to get enrolment details from the school's website.

Please complete and return the accompanying offer response form by the due date.

School	Outcome	Reserve Number
Merewether High School	Offer	

Yours sincerely  
*M. Pollak*  
(Ms) Magda Pollak  
Leader, High Performing Students Unit

The student listed above achieved a calculated profile score of 209.62 out of 300.  
The highest calculated profile score achieved this year was 276.51 out of 300.  
The average calculated profile score of all candidates statewide was 179.98 out of 300.  
Calculated profile scores combine test scores and school assessment scores.  
Please note that calculated profile scores can be adjusted by individual selection committees and appeals panels. It is not possible to show specific adjustments to scores in this document.  
Our website, [www.schools.nsw.edu.au/shsplacement](http://www.schools.nsw.edu.au/shsplacement), contains further information concerning calculated profile scores. Click on 'Score processing'.

## Transition Program

- Students come from many different Primary Schools (67 schools in 2019)
- School Visits
- Information Session and Tours
- GATS Challenge Day
- Orientation Day
- Travel Training



# Further Information

Further  
Information

- Specific information about Merewether High School is available via our school website  
[www.merewether-h.schools.nsw.edu.au](http://www.merewether-h.schools.nsw.edu.au)
- Questions – please discuss with your current primary school Principal
- NSW Public Schools - selective high school placement  
<https://education.nsw.gov.au/public-schools/selective-high-schools-and-opportunity-classes/year-7>