



Welcome!

In this edition we will share some bus safety tips for both drivers, parents and carers.

NSW has one of the largest bus fleets in Australia. Buses can't stop quickly because they are large and heavy vehicles, so it's worth remembering the following tips.

Useful driver tips

- Lights flash on buses to warn motorists that buses are picking up and dropping off passengers (often school children)
- Slow down to 40km/h when overtaking or passing a bus displaying flashing lights
- A driver can help keep children safe by:
 1. Sticking to the speed limit and following the road rules in school zones
 2. Slowing down to 40km/h when bus lights are flashing
 3. Looking out for children crossing the road near bus stops in school zones or along bus routes
 4. Giving way to buses when they merge back into the traffic



Useful parent and carer tips

Children are most at risk in the minutes after getting off the bus. Below are some ways you can help reduce this risk:

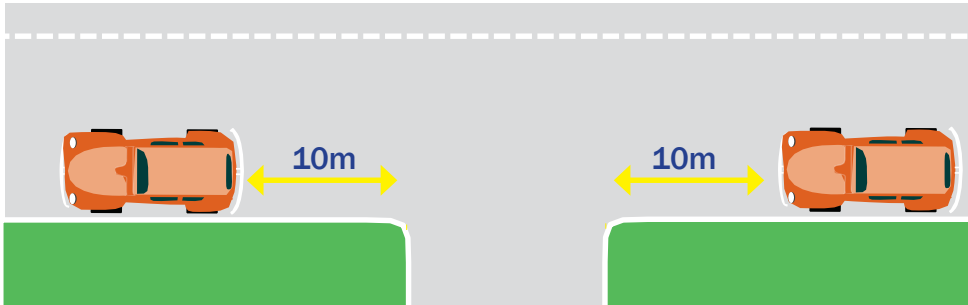
- Always drop off/pick up your child on the same side of the road as the bus stop (but not in the Bus Zone)
- Meet your child at the bus stop (remembering to stand back from the kerb)
- Wait until the bus has gone before choosing a safe place to cross the road



Parking Rules

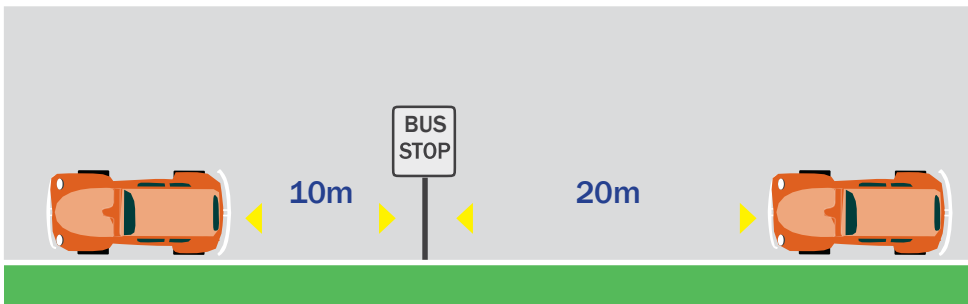
Please park safely and legally on the streets around your school. Park legally so you do not incur parking fines and demerit points. Council's Traffic Compliance Officers enforce parking around schools. If you park contrary to the road rules you will be fined!

You cannot stop or park your vehicle:



Within 10m of an intersecting road at an intersection without traffic lights (20m with traffic lights), unless a sign states you can park there (see image at left).

PENALTIES FROM: \$464
Demerit Points apply in School Zone

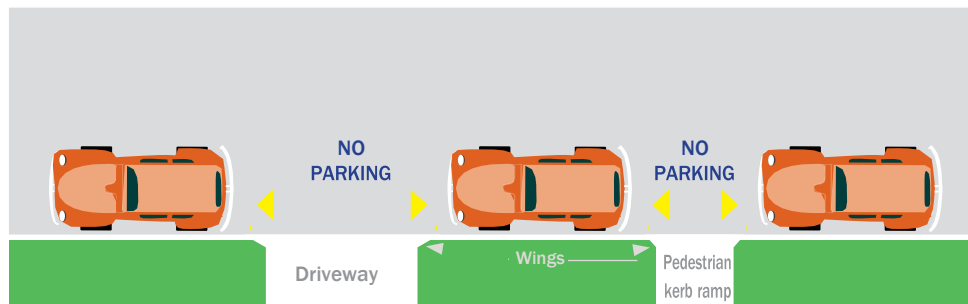


Within 20m before and 10m after a bus stop (see image)

PENALTIES FROM: \$349
Demerit Points apply in School Zone

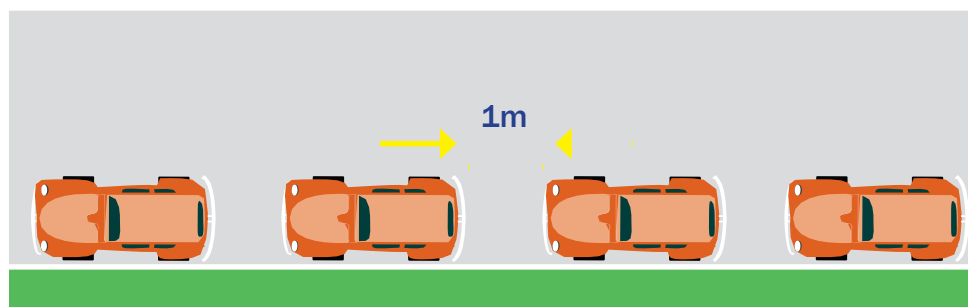
Parallel parking

This is the usual way to park unless signs tell you otherwise. You must park in the same direction as the adjacent traffic and parallel and as close as possible to the kerb.



You can NOT park across driveways or pedestrian kerb ramps. A vehicle can be parked up to the wings on the driveways or ramp (see image)

PENALTIES FROM: \$349
Demerit Points apply in School Zone



You should park at least one metre from any other parked vehicle and entirely within any marked parking lines where provided (see image)

PENALTIES FROM: \$116