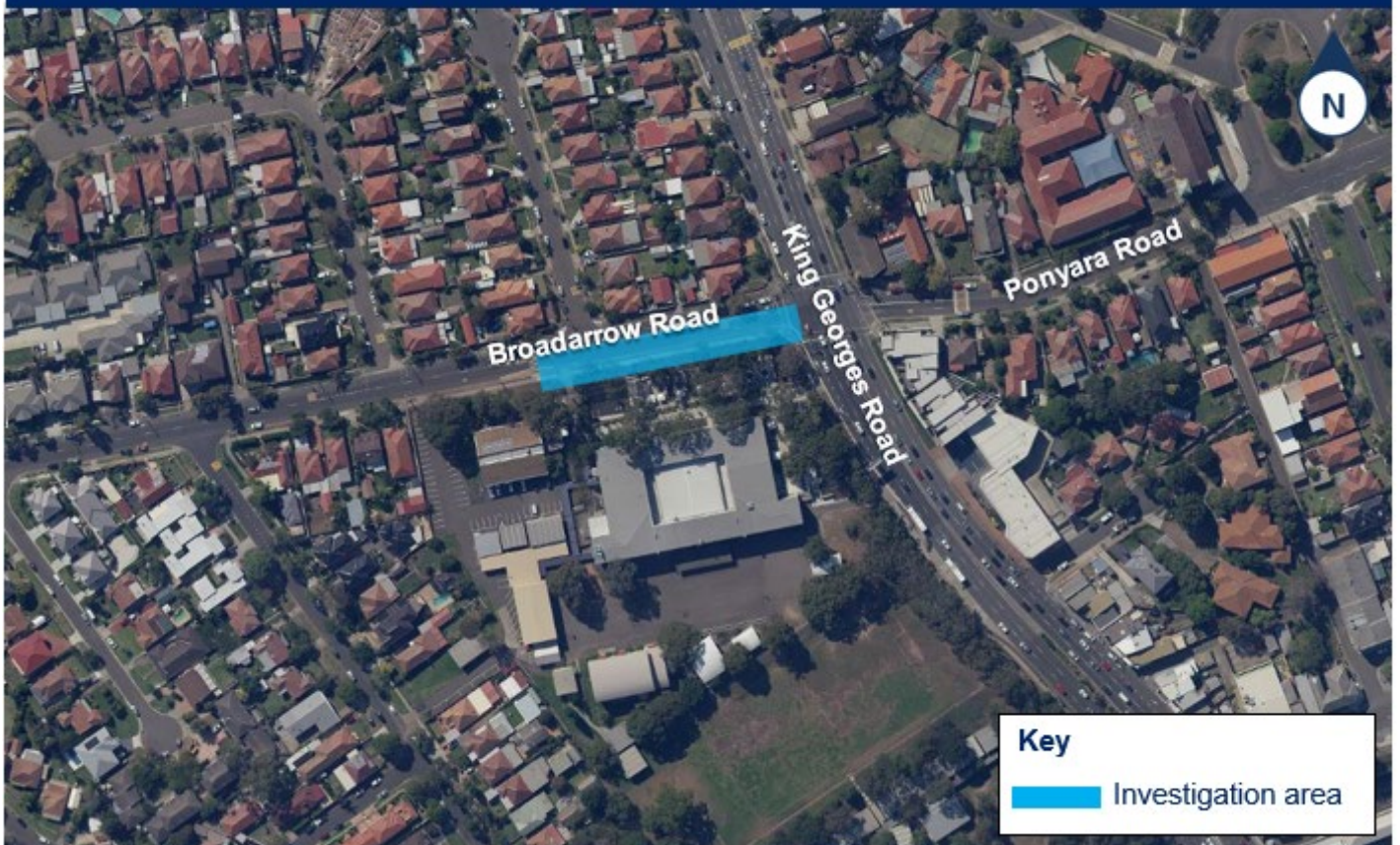


Investigation work on Ponyara, Broadarrow and King Georges Roads, Beverly Hills

Transport for NSW | May 2020

Transport for NSW will be conducting investigation of utilities and infrastructure on Ponyara, Broadarrow and King Georges Roads, Beverly Hills. Some work will also be completed in the surrounding streets. This work will include surveying, collecting soil samples within the area and drilling potholes. These investigations form part of the Roads and Maritime Gateway to South Pinch Points Program which aims to relieve traffic congestion and improve traffic flow on Sydney's major corridors, including maximising capacity at key intersections.

Location of work on Broadarrow Road, Beverly Hills



Our work schedule

The work will be carried out over **three night shifts** between **Monday 11 May** and **Monday 25 May 2020**, weather permitting.

Our night work hours will be between **9pm** and **5am** from **Sunday** to **Thursday**.

Changes to traffic conditions

Brief, intermittent lane closures might take place over the course of the work.

Please keep to speed limits and follow signs and traffic controllers' directions.

For the latest traffic updates, you can call 132 701, visit livetraffic.com or download the Live Traffic NSW App.

Contact us

To ensure we protect public health and safety during the Coronavirus outbreak, we need to change the way we consult with the community. Please be assured we'll continue to respond any questions or concerns you may have about our work.

If you have any questions or would like more information on the project please contact our delivery partner, Ventia Boral Amey Joint Venture:



1800 677 700



nswenquiries@vbajv.com.au



If you need help understanding this information, please contact the Translating and Interpreting Service on **131 450** and ask them to call us on **1800 677 700**.