

Planned burning is scheduled in your area

North Blackwood - Firth Road

A planned burn has been scheduled to proceed in your area, when fuel moisture and weather conditions are assessed as suitable.

Each year, Forest Fire Management Victoria (FFMVic), together with CFA and other emergency services, carry out a fuel management program in Victoria's parks and forests to reduce the bushfire risk to communities, property and the environment.

FFMVic will only ignite this planned burn when fuel moisture and weather conditions, such as humidity, temperature and wind speed have been assessed as suitable. The decision to proceed is made on the day of the burn following extensive monitoring of these conditions.

Once ignited, you may see and smell smoke in the area and some local tracks may be closed. You can expect to see FFMVic crews lighting and patrolling the burn area for a number of days.

BURN DETAILS

Location	10km SW of North Blackwood
Grid Reference	Spatial Vision Central Map Book 6441 Grid Reference 55H BU 720 508
Planned Area	1202.45 hectares, 17.27km
Land Management Objective	To develop fuel reduced areas of sufficient width and continuity to reduce the speed and intensity of bushfires.
Fire Management Zone	Bushfire Moderation Zone

For Further Information:

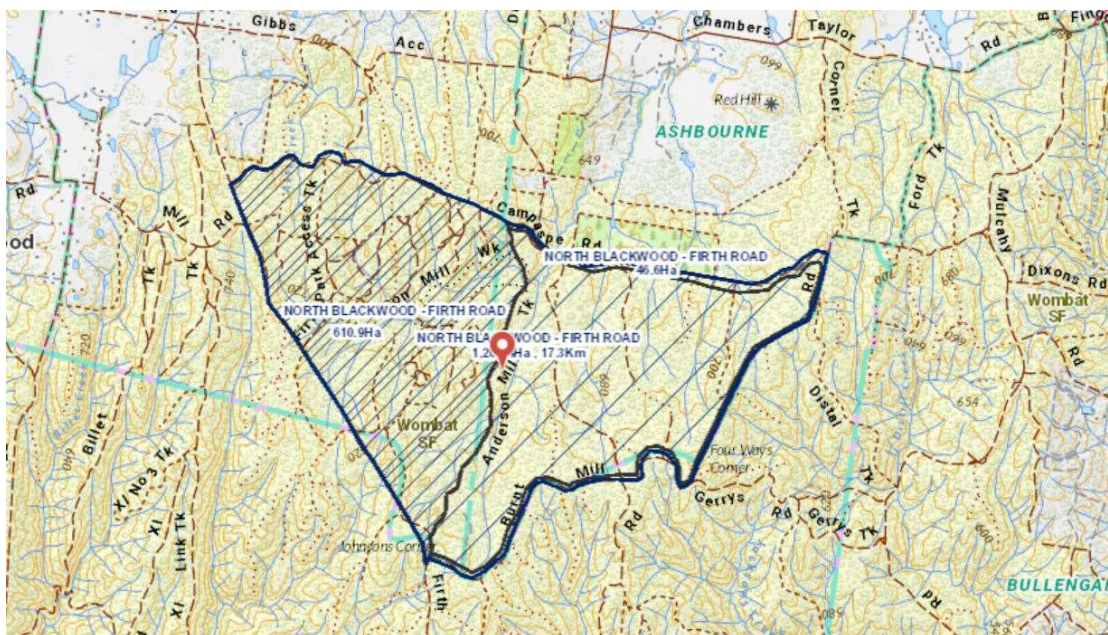
Visit: www.ffm.vic.gov.au/plannedburn

Register: ffm.vic.gov.au/plannedburn

Email: midlands.fuelmanagement@delwp.vic.gov.au

Phone: 1800 226 226

Download: VicEmergency App



Planned burning is scheduled in your area

Forest Fire Management Victoria (FFMVic) and the Fuel Management Program

FFMVic consists of specialist staff drawn from the Department of Environment, Land, Water & Planning, Parks Victoria and VicForests. FFMVic is responsible for managing the fuel management program throughout Victoria's parks and forests.

The fuel management program includes planned burning, which involves the planned use of fire to reduce fine fuel such as undergrowth, dead wood, leaf litter, bark and shrubs. Burns are carried out near communities and in remote areas to help reduce the spread and intensity of bushfires and the threat to life and property. Planned burns also help plants and animals that have evolved to depend on fire to survive.

The planned burns scheduled for completion form part of a broader fuel management program planned for the Midlands District. Planned burns are prioritised using a risk-based approach to bushfire management according to a number of criteria including protection to life and property, community requirements, environmental considerations and geographic distribution across the landscape.

Protect your health from smoke

Fuel management programs are happening across Victoria to reduce bushfire risk to communities and the environment. Smoke may affect some people's health by triggering asthma or other lung or heart conditions. Older people and young children are particularly at risk.

If you live in or are visiting a smoke-affected area, plan ahead to protect your health:

- Keep checking when and where planned burns are expected to happen in your region so you can be prepared for smoke. Plans can change at very short notice due to a combination of weather conditions. Refer to the Planned Burns Victoria (PBV) system or contact the Fuel Management Team on midlands.fuelmanagement@delwp.vic.gov.au to have your details added to the individual burn plan.
- If you have a health condition, you should follow the treatment plan provided by your doctor and if you are asthmatic, follow your asthma plan and carry reliever medication with you.

During smoky conditions:

- First check www.emergency.vic.gov.au. If the smoke is caused by a fire, you may be at risk and need to leave. If the smoke is from a planned burn, stay indoors with windows and doors closed.
- You may wish to leave the area if it is affected by smoke.
- If you experience symptoms that may be due to smoke exposure, seek medical advice or call Nurse-on-Call on 1300 606 024.

Find out more at www.health.vic.gov.au

delwp.vic.gov.au/ffmVic

COVID-19

FFMVic's experienced fire crews are carrying out planned burns under carefully managed conditions, including adhering to appropriate physical distancing and hygiene requirements due to coronavirus (COVID-19).

Planned Burns Victoria (PBV)

The Planned Burns Victoria system notifies people when a planned burn in a park or forest is close to being ignited. The system provides you with advance notice of upcoming planned burns to make informed decisions about managing the effects.

It displays all FFMVic burns that are intended to be carried out in Victorian parks and forests over the next three years and shows their status.

You subscribe to the system and customise it to suit your particular notification needs – you can register for this automated notification system by visiting ffm.vic.gov.au/plannedburn

Joint Fuel Management Plan

The Joint Fuel Management Plan (JFMP) outlines where and when FFMVic and CFA intend to carry out fuel management operations within Victoria over the next three years. This includes planned burning, slashing, mowing, mulching and clearing works.

The JFMP is driven by FFMVic and CFA's strategic planning and is updated each year with the latest local information to determine what fuel management activities will be carried out.

FFMVic welcomes comments all year round and encourages you to have input into all parts of the planning process for the Midlands District by emailing midlands.fuelmanagement@delwp.vic.gov.au.

Stay Informed

Visit: www.ffm.vic.gov.au/plannedburn

Register: ffm.vic.gov.au/plannedburn

Call: Vic Emergency Hotline
1800 226 226 (Free Call)
133 677 (National Relay Service)
131 450 (Translating & Interpreter Service)

Download: VicEmergency App

© The State of Victoria Department of Environment, Land, Water and Planning 2022



This work is licensed under a Creative Commons Attribution 4.0 International licence. You are free to re-use the work under that licence, on the condition that you credit the State of Victoria as author. The licence does not apply to any images, photographs or branding, including the Victorian Coat of Arms, the Victorian Government logo and the Department of Environment, Land, Water and Planning (DELWP) logo. To view a copy of this licence, visit <http://creativecommons.org/licenses/by/4.0/>

Disclaimer

This publication may be of assistance to you but the State of Victoria and its employees do not guarantee that the publication is without flaw of any kind or is wholly appropriate for your particular purposes and therefore disclaims all liability for any error, loss or other consequence which may arise from you relying on any information in this publication.

OFFICIAL